

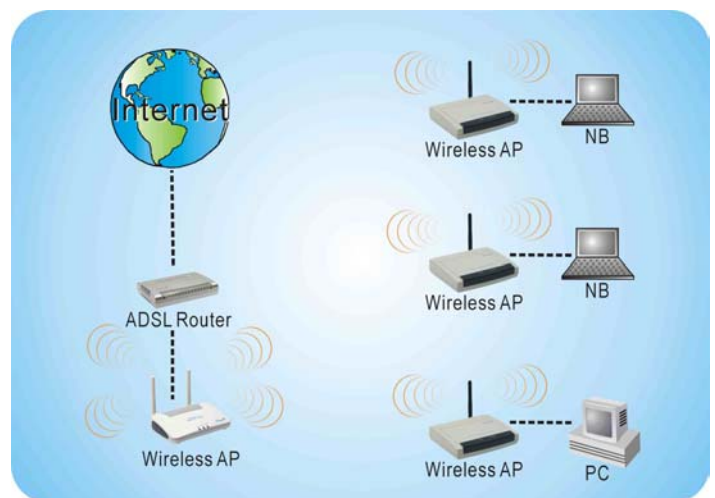


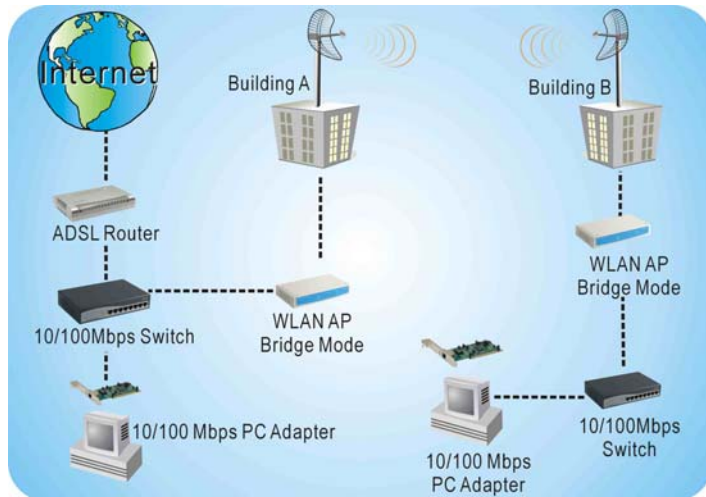
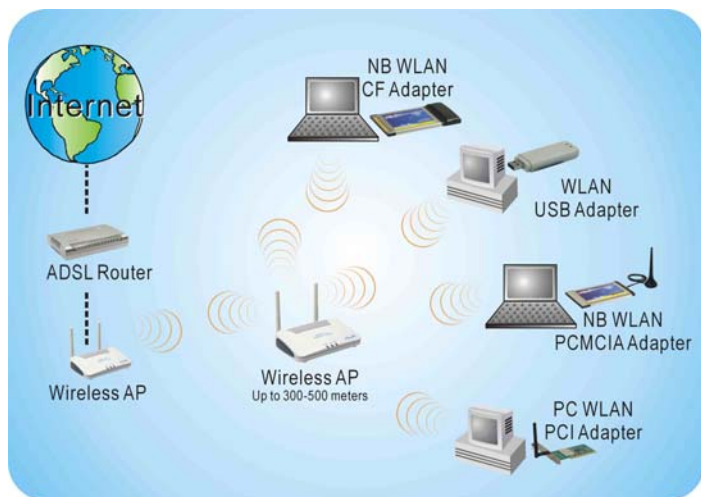
WAP-154G

IEEE802.11g 108Mbps SOHO Access Point W/ Bridge & Repeater function (Atheros), Detachable Antenna, W/Reverse SMA connector

PheeNet WAP-154G is an IEEE 802.11g 108Mbps (Turbo Mode) SOHO Access Point (Atheros). It provides full function of access point, AP, AP Client, Bridge and Repeater modes. WAP-154G supports wireless data encryption with 64/128/152-bit encryption WEP, SSID Broadcast Disable function, MAC address filtering (ACL) and new standard of WPA. WAP-154G equipped with Dual diversity external antenna, you can use high gain antenna to get better performance, and increase the coverage area. For user friendly configuration, WAP-011RT provides Web-based configuration.

APPLICATION





Features

1. Compatible with IEEE 802.11b 11Mbps & IEEE802.11g 54Mbps.
2. Turbo mode supported, up to 108Mbps.
3. Supports wireless data encryption with 64/128/152-bit WEP for security.
4. Supports enhanced security – WPA, 802.1x, RADIUS client, and Cipher negotiation, and AES.
5. Supports DFS/TPC for European operations.
6. Ethernet Interface with 10/100BASE-TX.
7. Web configuration and management.

Specification

Industrial Standard	
Standard	IEEE802.11b, IEEE 802.11g Compliant
	IEEE802.3 10BaseT Ethernet
	IEEE802.3u 100BaseTX Fast Ethernet
Interface	10/100Base-TX (RJ-45) x 1
Security	64/128/152-bit encryption
	SSID Broadcast Disable function
	MAC address filtering(ACL)
	Transmit Power Control(TPC)
	802.1x(EAP-MD5, EAP-TLS, and EAP-TTLS), WPA
	System log
RF	
Frequency Band	2.400~2.497 GHz ISM band
Signal Type	DSSS(802.11b), OFDM(802.11g)
Modulation	CCK (802.11b), BPSK, QPSK, 16-QAM, 64-QAM (802.11g)
Antenna	Omni-directional dipole antennas with 2dBi gain(Reverse SMA connector)

Sensitivity	802.11b: -83dBm@11Mbps -89dBm@2Mbps
Sensitivity	802.11g: -87dBm@6Mbps -86dBm@9Mbps -85dBm@12Mbps -83dBm@18Mbps -80dBm@24Mbps -76dBm@36Mbps -71dBm@48Mbps -66dBm@54Mbps
Output Power	802.11b: 18dBm 802.11g: +14 ~ 15dBm@54Mbps and 108Mbps +14 ~ 16dBm@48Mbps +16 ~ 18dBm@36, 24, 18, 12, 9, and 6Mbps
Channel	FCC: 11 Channels (US, Canada) ETSI: 13 Channels (Europe) TELEC: 14 Channels (Japan)
Features	
Operating Mode	AP
	AP Client
	Bridge
	Repeater
Management	Web configuration
	DHCP Client list(MAC address)
	SNMPv3
Hardware	
Environment	Operating Temperature:0~40°C
	Storage Temperature:-20~65°C
	Humidity: 5%~95%(non condensing)
Power Supply	DC 5V
LED Indicators	Power, LAN, WLAN
Dimensions	110(L) X 80(W) x 20(H) mm
Certificate	FCC, CE



We Connect The World
Pheecom Technology Corp.



Rm. 3, 20F, NO. 79, Hsin Tai Wu Rd., Sec. 1,
Hsi-Chih, Taipei, Taiwan
TEL:886-2-26982011 FAX:886-2-26981421
<http://www.pheenet.com>
E-MAIL:sales@pheenet.com.tw

